

wAP ac

wAP ac – a small dual-band weatherproof wireless access point for mounting on a pole, wall, or the ceiling.



**Upgraded
version!**



Two Gigabit
Ethernet ports



Better cooling



Can be securely fixed
to any external wall



Strong dual-chain
dual-band wireless



Enhanced wireless
antenna performance



Quad-core CPU,
128 MB RAM



PoE-in

The wAP ac is a small weatherproof wireless access point for your mobile devices, perfect for installation outside your house, in the garden, on your porch, or anywhere else where you need a capable wireless connection.

The new revision features 2x Gigabit Ethernet ports, enhanced wireless antenna performance, more RAM, and a powerful quad-core CPU.



Reliable connection for all your devices

Strong dual-chain dual-band 2.4/5 GHz wireless for concurrent coverage will solve most interference issues in a crowded environment. This is a must-have these days! You can use the 2.4 GHz channel for older devices and the 5 GHz channel for everything else since this frequency is less cluttered.

Improved enclosure - looks good, works even better

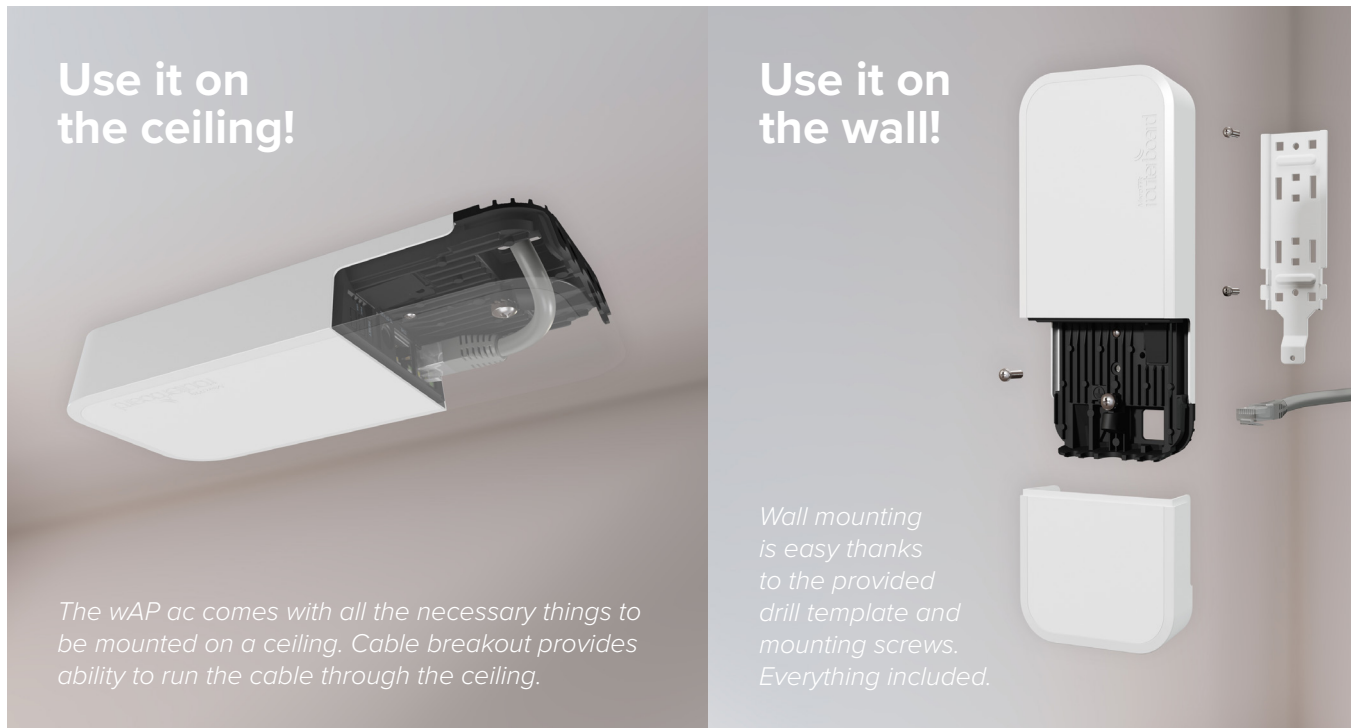
The wAP ac is weatherproof and can be fixed to any external wall from the inside of the case – for extra security and less visible attachments. The bottom part can also be secured with a special anti-vandal screw, which can only be opened by the owner.

There is an opening in the back of the case, allowing you to run the Ethernet cable directly behind the unit and through the wall. This way the wAP ac attracts less attention and blends into any environment. It looks unobtrusive and sleek, available in two colours - black (RBwAPG-5HacD2HnD-BE) and white (RBwAPG-5HacD2HnD).

Available in two colors



With the new revision, we have significantly improved the thermal properties of the enclosure – you don't have to worry about any overheating!

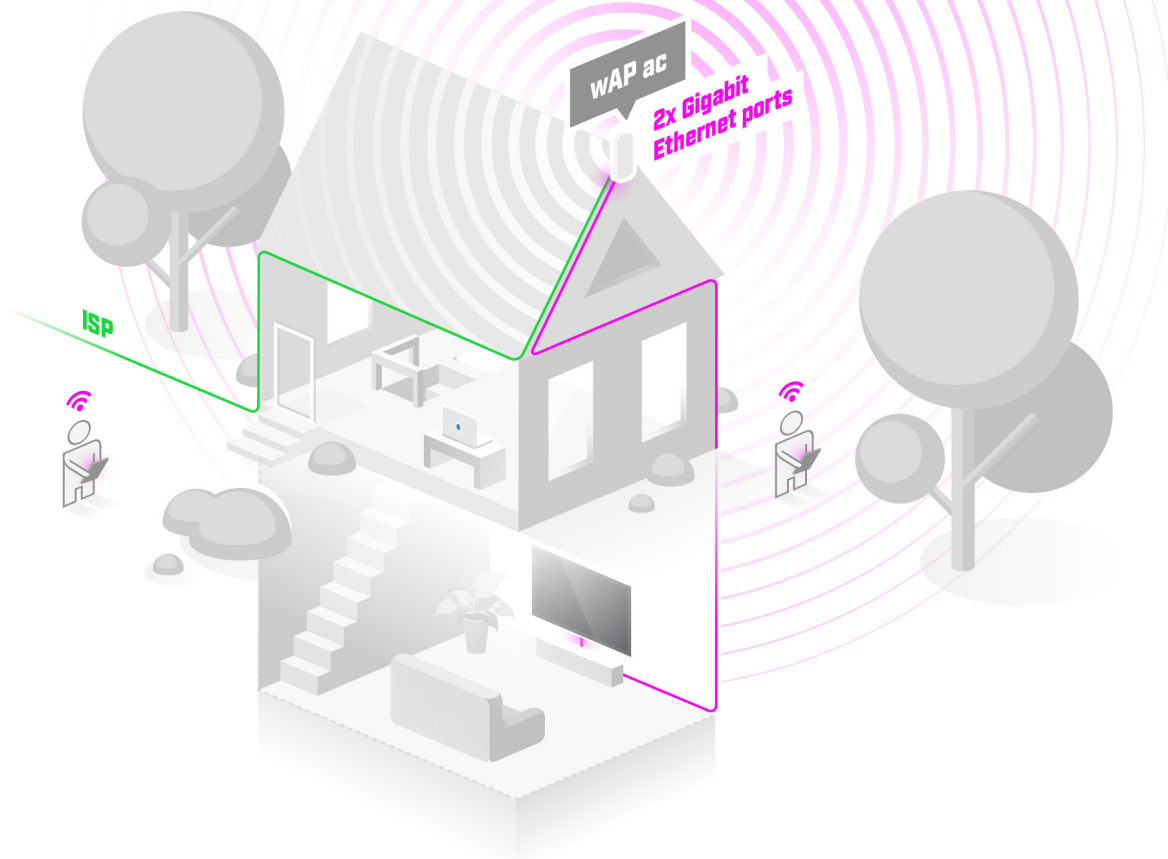


RouterOS – extreme versatility

Run a secure VPN from the office directly to your home, enable parental control, Quality of Service (traffic prioritization for certain needs, such as streaming), specific firewall rules, IPsec hardware acceleration, VLAN, DHCP, e-mail or SMS notifications, and so on. With RouterOS scripting you can automate a lot:

- modify queues based on bandwidth usage;
- complex trigger notifications, such as “Your bandwidth has reached X for Y minutes!”;
- backups and setup of additional devices, and so much more!

If you can imagine it – RouterOS can achieve it. You can even install RouterOS on a PC or a virtual machine for even more networking experiments! We also include a free handy tool for centralized management of all your wireless MikroTik devices – the CAPsMAN. Unlike traditional controller software, CAPsMAN doesn’t require a separate device to run, it can use any existing RouterOS device in your network. We have been making our own software since 1996. With each new version, our priority remained the same: to provide users with the freedom to explore different setups and always have the right tools for the job. Without unnecessary paywalls.



Specifications

| | | |
|-----------------------------|---|-------------|
| Product code | RBwAPG-5HacD2HnD (white, international) RBwAPG-5HacD2HnD-BE (black, international) | |
| CPU | 4 core IPQ-4018 716 MHz | |
| Size of RAM | 128 MB | |
| Storage | 16 MB flash | |
| Number of 1G Ethernet ports | 2 | |
| Wireless | 5 GHz | 2.4 GHz |
| Protocols | 802.11a/n/ac | 802.11b/g/n |
| Chains | Dual-chain | Dual-chain |
| Wireless interface model | IPQ-4018 | IPQ-4018 |
| Antenna gain | 2.5 dBi | 2.5 dBi |
| Antenna beam width | 360° | |
| PoE-in | 802.3af/at | |
| Supported input voltage | 10 V - 57 V (DC jack) 18 V - 57 V (PoE-in) | |
| Dimensions | 185 x 85 x 30 mm | |
| Operating system | RouterOS, License level 4 | |
| Max power consumption | 10 W | |

Wireless specifications

| Rate (2.4 GHz) | Tx (dBm) | Rx (dBm) | Rate (5 GHz) | Tx (dBm) | Rx (dBm) |
|----------------|----------|----------|--------------|----------|----------|
| 1MBit/s | 25 | -100 | 6MBit/s | 24 | -96 |
| 11MBit/s | 25 | -94 | 54MBit/s | 20 | -80 |
| 6MBit/s | 25 | -96 | MCS0 | 24 | -96 |
| 54MBit/s | 19 | -78 | MCS7 | 19 | -75 |
| MCS0 | 25 | -96 | MCS9 | 17 | -70 |
| MCS7 | 18 | -73 | | | |

Certification & Approvals

Certification | CE, FCC, IC

Included parts



24 V 0.8 A
power adapter



K-52
fastening set



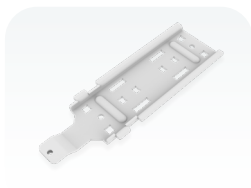
PoE
injector



Desktop stand



Ceiling mount
base



Outdoor case
bracket