

mANTBox 2 12s

mANTBox 2 12s is long range 12dbi 120 degrees integrated Base Station for 2.4 GHz.

The mANTBox is based on our new mANT sector antennas, but also has a wireless router built right in. Powered by the RB911 device, the mANTBox comes ready to use with everything included. The device uses a high speed 600 MHz CPU, comes with the Gigabit Ethernet port and has a built in 802.11 b/g/n wireless device with up to 30 dBm output power.



The mANTBox 2 12s is compatible with the SXT type mount, so you can use it with our durable and adjustable QuickMount systems. It comes with quickMOUNT PRO included.



Gigabit PoE injector



24 V 0.8 A power adapter



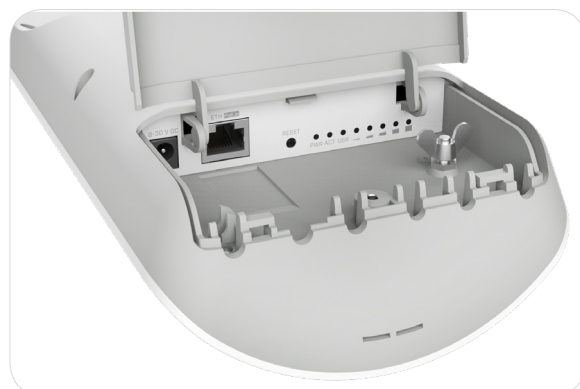
quickMOUNT PRO



K-41 screw kit



Metal ring



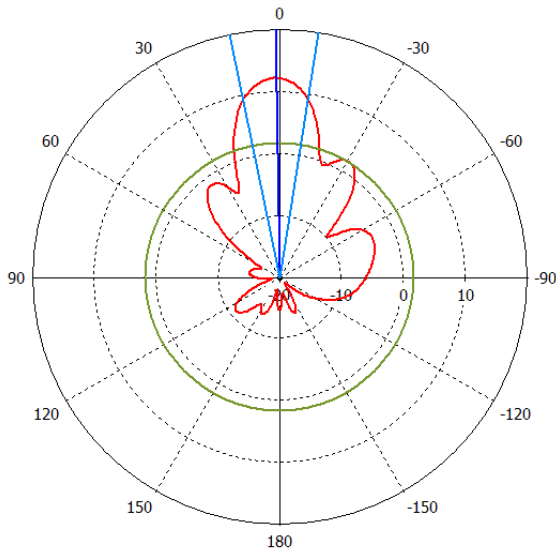
Specifications

Product code	RB911G-2HPnD-12S
CPU	AR9342 600 MHz
Size of RAM	64 MB
Data storage	128 MB NAND, 64 KB Flash
10/100/1000 Ethernet ports	1
Wireless	Built-in 2.4 GHz 802.11b/g/n, dual-chain
Wireless regulations	Specific frequency range can be limited by country regulations
PCB temperature monitor	Yes
Voltage monitor	Yes
Power input	jack: 8-30 V DC, PoE in: 10-28 V DC
Power consumption	11 W
LEDs	8
Beeper	Yes
Operating system	MikroTik RouterOS, Level 4 license
Antenna gain	12 dbi
Frequency range	2312 - 2732 MHz
Polarization	Vertical and horizontal
3DB Beamwidth - azimuth	120 deg
Dimensions	140 x 348 x 82 mm

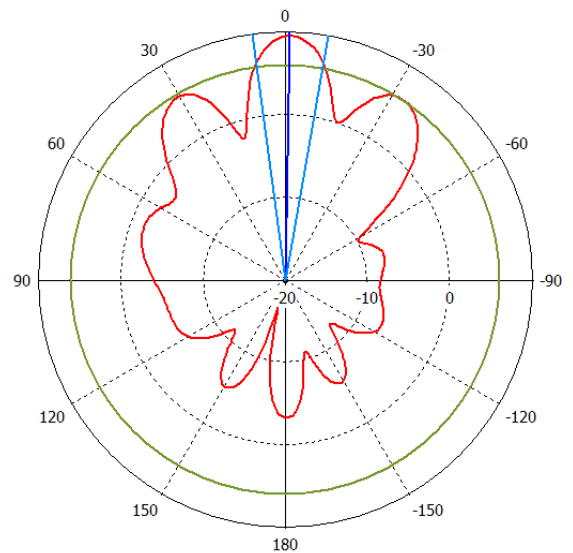
Wireless specifications

RATE	Tx (dBm)	Rx (dBm)
1MBit/s	30	-100
11MBit/s	30	-94
6MBit/s	30	-96
54MBit/s	27	-78
MCS0	30	-96
MCS7	24	-73

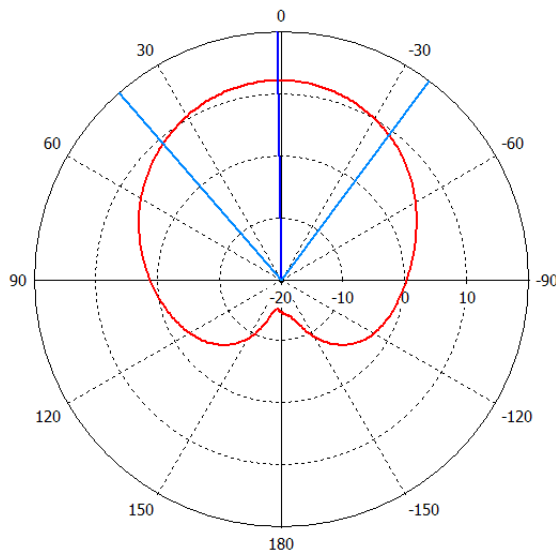
Antenna patterns



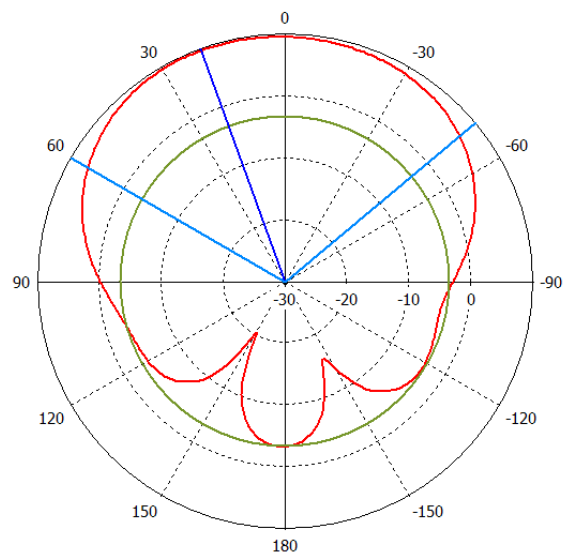
VP elevation



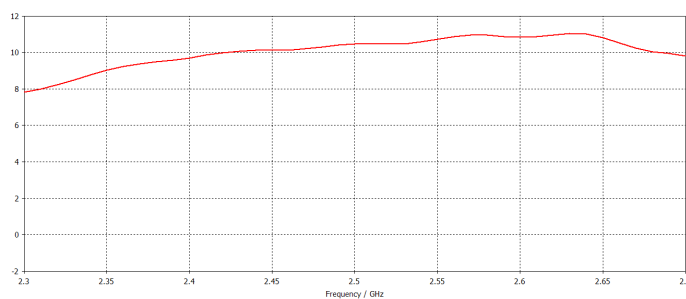
HP elevation



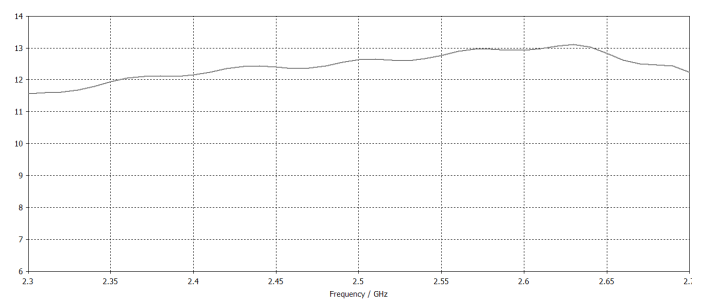
VP azimuth



HP azimuth



HP gain



VP gain