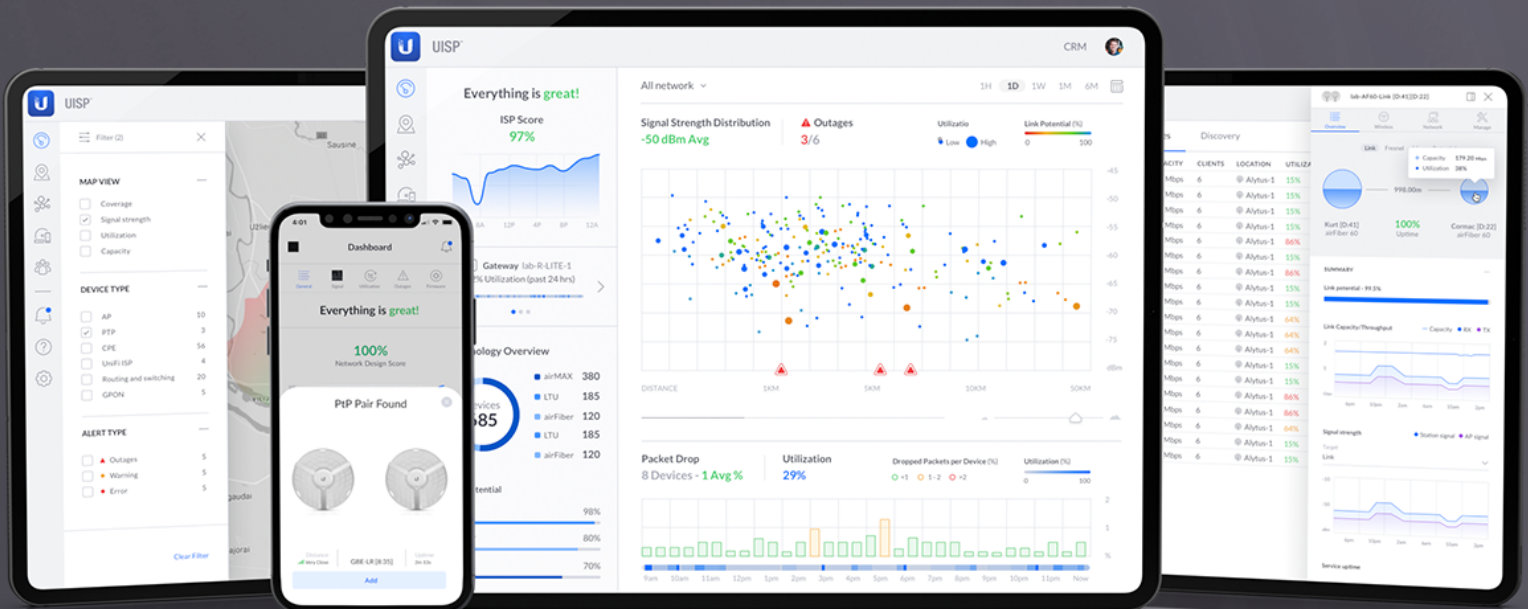


UISP[®]



GigaBeam Plus

GBE-Plus is a 60 GHz Radio capable of supporting 1Gbps rates with low latency. GBE-Plus supports PtP operating mode and is managed through the UISP dashboard.



Mechanical

Dimensions	Ø155 x 137 mm (Ø6.1 x 5.4")
Weight	1kg (2.2 lb)
Enclosure Materials	UV Resistance Polycarbonate, Stainless Steel
Mount Materials	Metal
Wind Loading	50 N at 200 km/h (11.24 lbf at 125 mph)

Hardware

Processor	Quad-Core ARM® Cortex® A7
Memory	256 MB DDR3
Networking Interface	10/100/1000 Mbps Ethernet RJ45
Management Interface	Ethernet In-Band Bluetooth
RF Connections	Internal
Max. Power Consumption	11W
Power Method	Passive PoE (Pairs 4, 5+; 7, 8-)
Power Supply	24VDC, 0.5A Gigabit PoE Adapter 24V, 1A for using Motor Accessory
Supported Voltage Range	22 to 26VDC
ESD/EMP Protection	Air/Contact: ± 24kV
Operating Temperature	-40 to 60° C (-40 to 140° F)
Operating Humidity	5 - 95% Noncondensing
Certifications	FCC, IC, CE

LEDs

Power	Flashing White: Bootup in Progress White: Not Connected to Ubiquiti® Internet Service Provider (UISP™) Blue: Connected to UISP
Ethernet	Flashing Blue: Ethernet Traffic Detected
60GHz	Blue: Active Connection

Software

OS	airOS®
Operating Modes	PtP as Access Point or Station
Ubiquiti Specific Features	Integrated 60 GHz Radio, Discovery Protocol
Security	WPA2 AES Only



Dashboard	Yes
Wireless Settings	Yes
Network Settings	Yes
System	Yes
Services	UISP, Ping Watchdog, Web Server, SSH Server, NTP Client, System Log, Device Discovery
Tools	Antenna Alignment Tool, Discovery Utility, Traceroute, Speed Test
Software Management	Bluetooth Management for Easy Setup Over UISP™ App WEB UI
Minimum Software Requirements	Any Modern Web Browser/iPhone/Android

RF

Operating Frequency*	57,000 - 66,000 MHz <small>*Depends on regulatory region.</small>
Max. Conducted TX Power	17 dBm
Channel Bandwidth	2160 MHz
Operating Channels	58320, 60480, 62640, 64800 MHz
Antenna Gain	35 dBi
Beamwidth	HPOL: NaN (The Antenna is Only Vertically Polarized) VPOL: 3° Elevation: 3°
Management Radio	2400 - 2483.5 MHz
Electrical Downtilt	0°



Specifications are subject to change. Ubiquiti products are sold with a limited warranty described at www.ui.com/support/warranty

©2020 Ubiquiti Inc. All rights reserved. Ubiquiti, Ubiquiti Networks, the Ubiquiti U logo, AirMax, GigBeam, airOS, and UISP are trademarks or registered trademarks of Ubiquiti Inc. in the United States and in other countries. All other trademarks are the property of their respective owners.