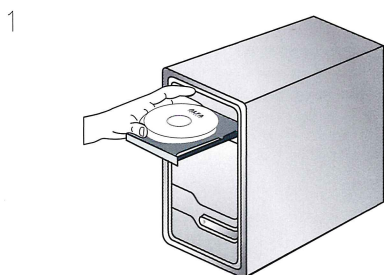
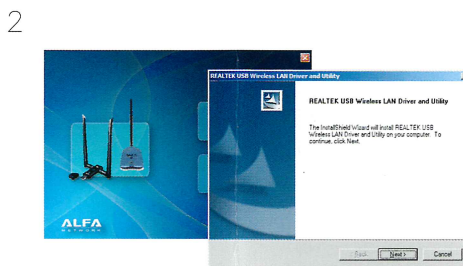




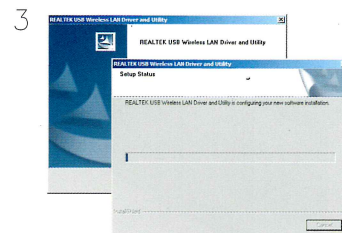
# Quick-Start Guide



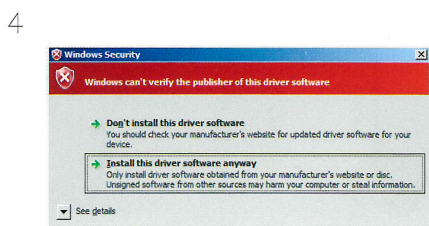
Insert supplied driver/user's manual CD into CD/DVD-Rom of your laptop/desktop computer. Driver menu shall start automatically in a few seconds.  
**Note:** if driver auto-run menu does not pop-up, please browse to CD root folder, double-click autorun.exe to enable driver installation menu.



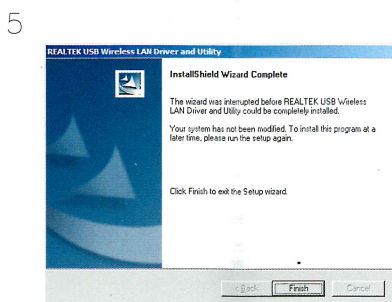
In driver selection menu, select appropriate operation system, and click **"Next"** to start driver installation.



Driver is now in installation, please wait some seconds till driver installation is completed.



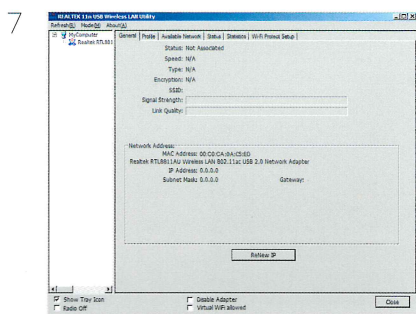
During driver installation, please click **"Install driver anyway"** to continue if there is a warning message about driver signature.



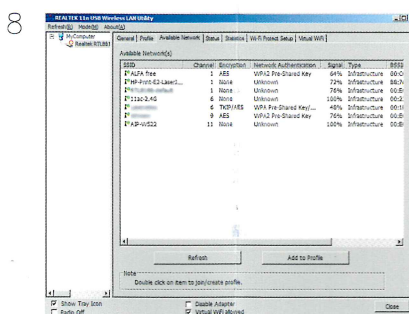
When driver installation completed, click **"Finish"** to close installation tasks. Restart computer if there is prompt message asking for reboot after installation.



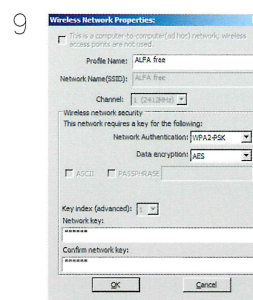
Install USB wireless adapter into a USB port of your laptop/desktop computer. Your computer shall detect the wireless adapter and driver will be applied automatically.



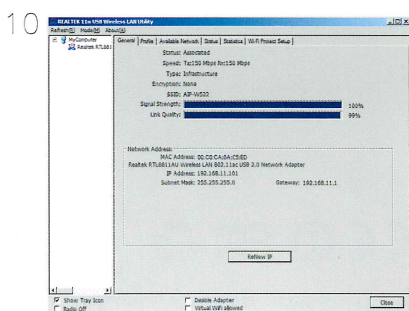
Double click on **"USB Wireless LAN Utility"** icon on desktop. Utility program will popup, and display installed adapter information.



Select **"Available Network"** tab, choose, and double-click the wireless SSID to connect to.



Input wireless security parameters, and click **"OK"** to connect to the wireless device.



When connected, wireless connection status (data speed, signal strength, link quality ...etc.) will be displayed in wireless utility window. Click **"Close"** to hide the wireless adapter utility.

## Notice

This quick-start guide introduces simple installations and configurations for USB wireless adapter. This guide is not intended to be a substitute for the user's manual. Further information of operation modes and wireless parameters, please refer to user's manual in the CD.



This product is suitable for all EU countries. The output power is restricted indoors, not applicable for outdoor application, wireless frequency ranging from 2454 to 2483,5 MHz.